

ARDEN P.U.D. POD C SOUTH

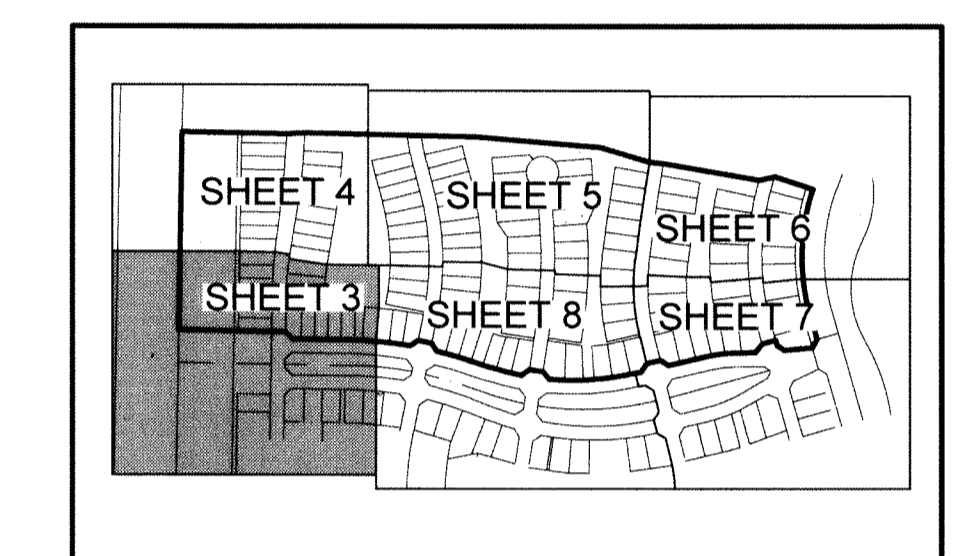
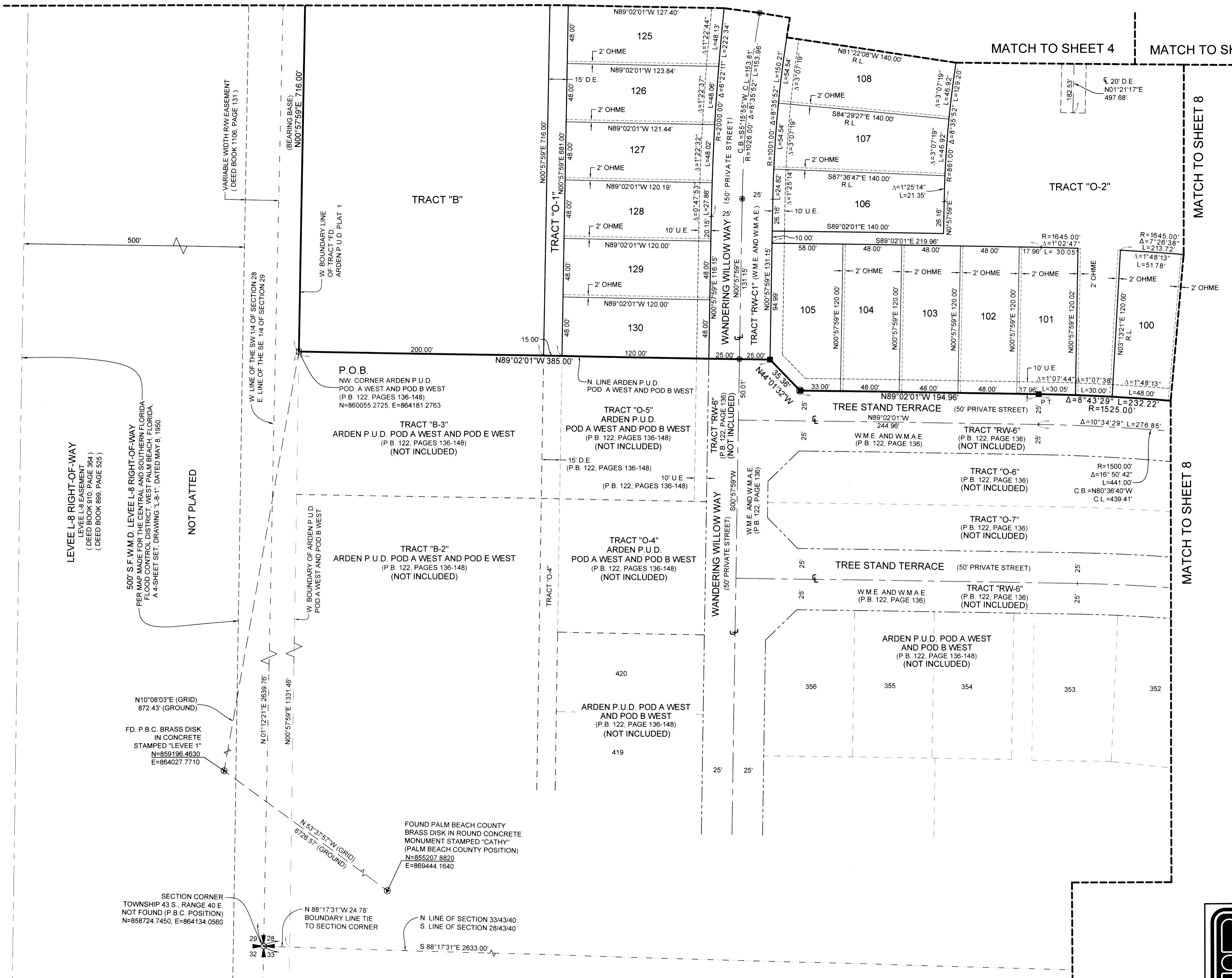
BEING A REPLAT OF A PORTION OF TRACT "FD", ARDEN P.U.D. PLAT 1, AS RECORDED IN PLAT BOOK 122, PAGES 32 THROUGH 51, PUBLIC RECORDS OF PALM BEACH COUNTY, FLORIDA, AND LYING IN SECTION 28, TOWNSHIP 43 SOUTH, RANGE 40 EAST, PALM BEACH COUNTY, FLORIDA.

50

MATCH TO SHEET 4

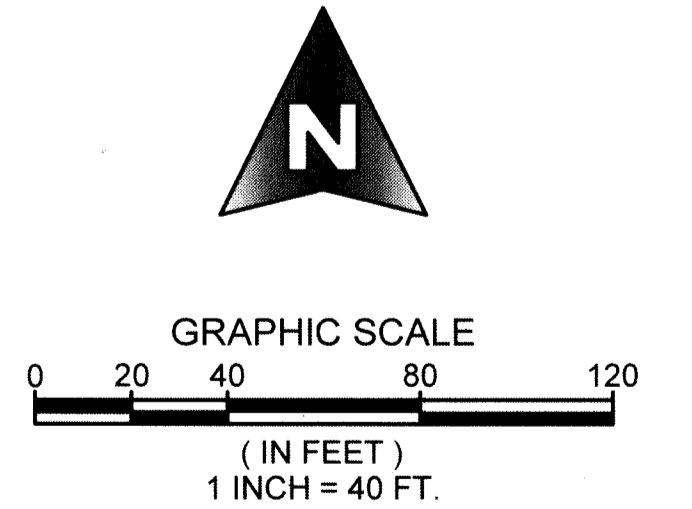
MATCH TO SHEET 4

MATCH TO SHEET 5



KEY MAP
NOT TO SCALE

COORDINATE NOTE:
STATE PLANE COORDINATES SHOWN ARE GRID DATUM, NAD 83 1990 ADJUSTMENT, FLORIDA EAST ZONE, COORDINATE SYSTEM 1983 STATE PLANE, TRANSVERSE MERCATOR PROJECTION
LINEAR UNIT = US SURVEY FEET
ALL DISTANCES ARE GROUND
SCALE FACTOR = 0.99999219
GROUND DISTANCE X SCALE FACTOR = GRID DISTANCE
BEARINGS AS SHOWN HEREON ARE GRID DATUM, NAD 83 1990 ADJUSTMENT, FLORIDA EAST ZONE.



LEVEE L-8 RIGHT-OF-WAY
LEVEE L-8 EASEMENT
(DEED BOOK 810, PAGE 364)
(DEED BOOK 899, PAGE 525)

500' S.F. W.M.D. LEVEE L-8 RIGHT-OF-WAY
PER MAP RECORD FOR THE CENTRAL AND SOUTHERN FLORIDA
FLOOD CONTROL DISTRICT, PALM BEACH COUNTY, FLORIDA,
A 4-SHEET SET, DRAWING "L-8-1", DATED MAY 8, 1950.

N10°08'03"E (GRID)
872.43' (GROUND)
FD. P.B.C. BRASS DISK
IN CONCRETE
STAMPED "LEVEE 1"
N=859196.4630
E=864027.7710

SECTION CORNER
TOWNSHIP 43 S., RANGE 40 E.
NOT FOUND (P.B.C. POSITION)
N=858724.7450, E=864134.0560

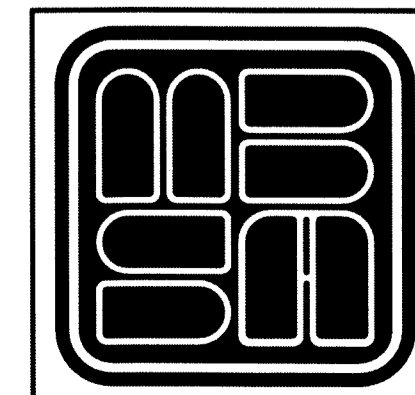
N 88°17'31"W 24.78'
BOUNDARY LINE TIE
TO SECTION CORNER

FOUND PALM BEACH COUNTY
BRASS DISK IN ROUND CONCRETE
MONUMENT STAMPED "CATHY"
(PALM BEACH COUNTY POSITION)
N=855207.8820
E=869444.1640

N LINE OF SECTION 33/43/40
S LINE OF SECTION 28/43/40

NOT PLATTED

SHEET 3 OF 8



**MICHAEL B. SCHORAH
& ASSOCIATES, INC.**
1850 FOREST HILL BLVD., SUITE 206
WEST PALM BEACH, FLORIDA 33406
EB# 2438 TEL. (561) 968-0080 FAX. (561) 642-9726 LB# 2438

ARDEN P.U.D. POD C SOUTH